

Freshman

Sophomore

Junior

Senior

CS 1064
Intro Programming
in Python

MATH 1225
Calculus of a
Single Variable I

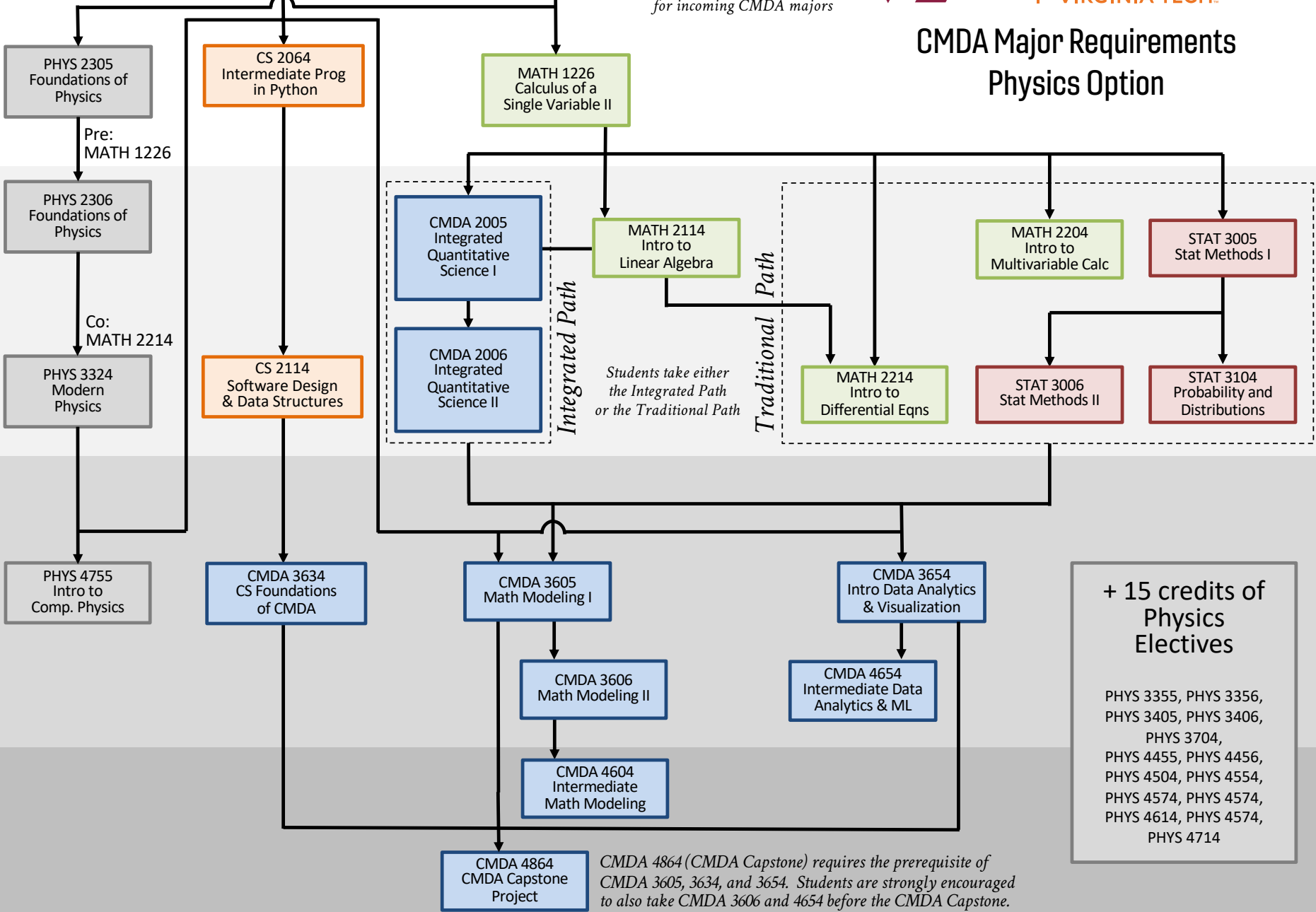
CMDA 1634
Discovering CMDA

Strongly recommended
for incoming CMDA majors



COLLEGE OF SCIENCE
COMPUTATIONAL MODELING
AND DATA ANALYTICS
VIRGINIA TECH.

CMDA Major Requirements Physics Option



Students take either
the Integrated Path
or the Traditional Path

Integrated Path

Traditional Path

**+ 15 credits of
Physics
Electives**

PHYS 3355, PHYS 3356,
PHYS 3405, PHYS 3406,
PHYS 3704,
PHYS 4455, PHYS 4456,
PHYS 4504, PHYS 4554,
PHYS 4574, PHYS 4574,
PHYS 4614, PHYS 4574,
PHYS 4714

CMDA 4864 (CMDA Capstone) requires the prerequisite of
CMDA 3605, 3634, and 3654. Students are strongly encouraged
to also take CMDA 3606 and 4654 before the CMDA Capstone.