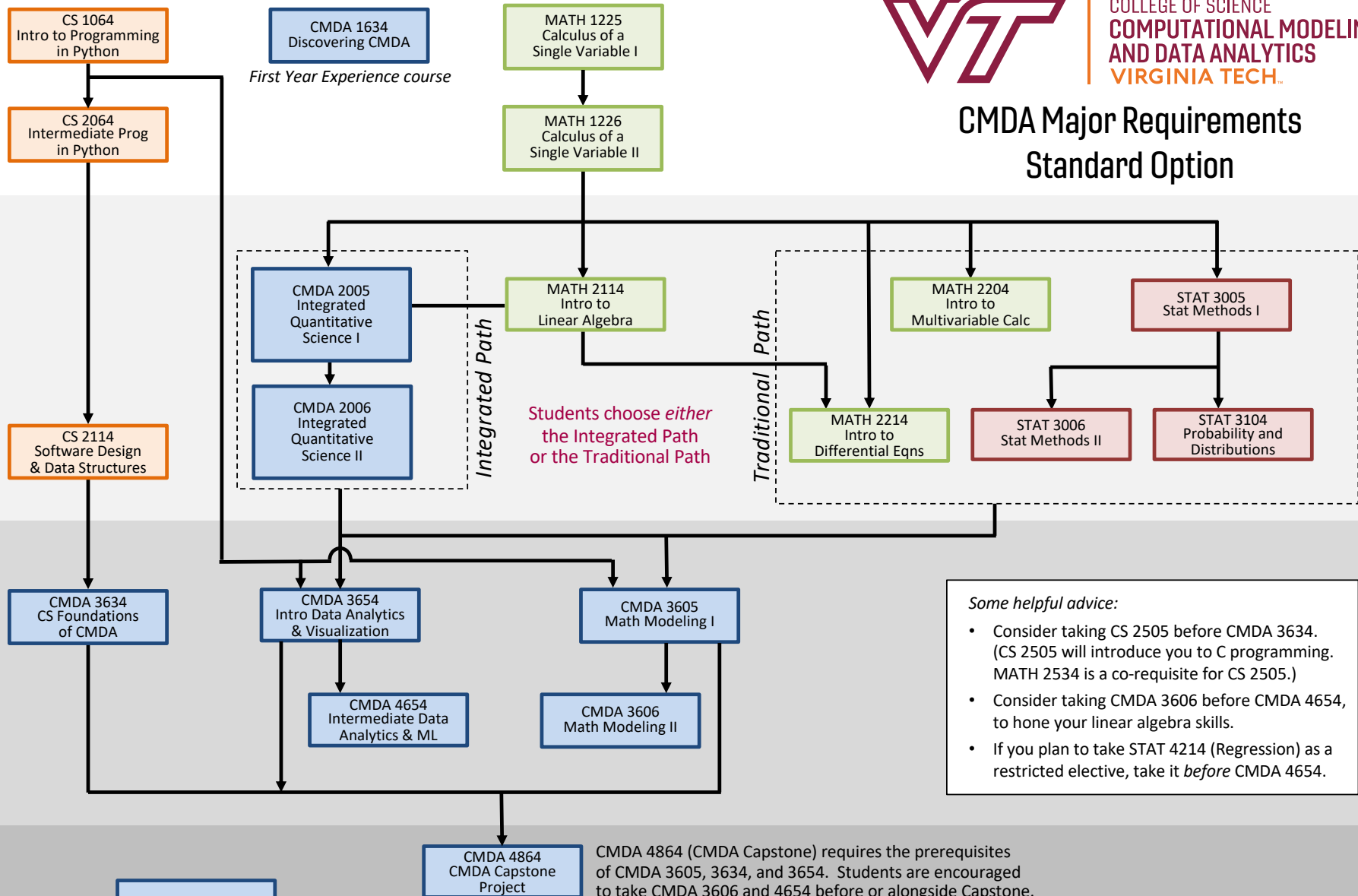




CMDA Major Requirements Standard Option



Some helpful advice:

- Consider taking CS 2505 before CMDA 3634. (CS 2505 will introduce you to C programming. MATH 2534 is a co-requisite for CS 2505.)
- Consider taking CMDA 3606 before CMDA 4654, to hone your linear algebra skills.
- If you plan to take STAT 4214 (Regression) as a restricted elective, take it *before* CMDA 4654.

+ 4 CMDA elective courses

Restricted elective options:

CMDA/ECON 4314; CMDA 4604, CMDA 4634, CMDA/STAT 4664
 CS 3114, CS 4104, CS 4604, CS 4824, FREC 3044, GEOG/GEOS 4084
 MATH 3134, MATH 4144, MATH 4175, MATH 4176, MATH 4425, MATH 4426, MATH 4445, MATH 4446
 STAT/CMDA 3274, STAT 4004, STAT 4204, STAT 4214, STAT/CMDA 4274, STAT 4364, STAT 4444, STAT 4504
 STAT 4514, STAT 4534, STAT 4744, PHYS 4755

CMDA 4864 (CMDA Capstone) requires the prerequisites of CMDA 3605, 3634, and 3654. Students are encouraged to take CMDA 3606 and 4654 before or alongside Capstone.