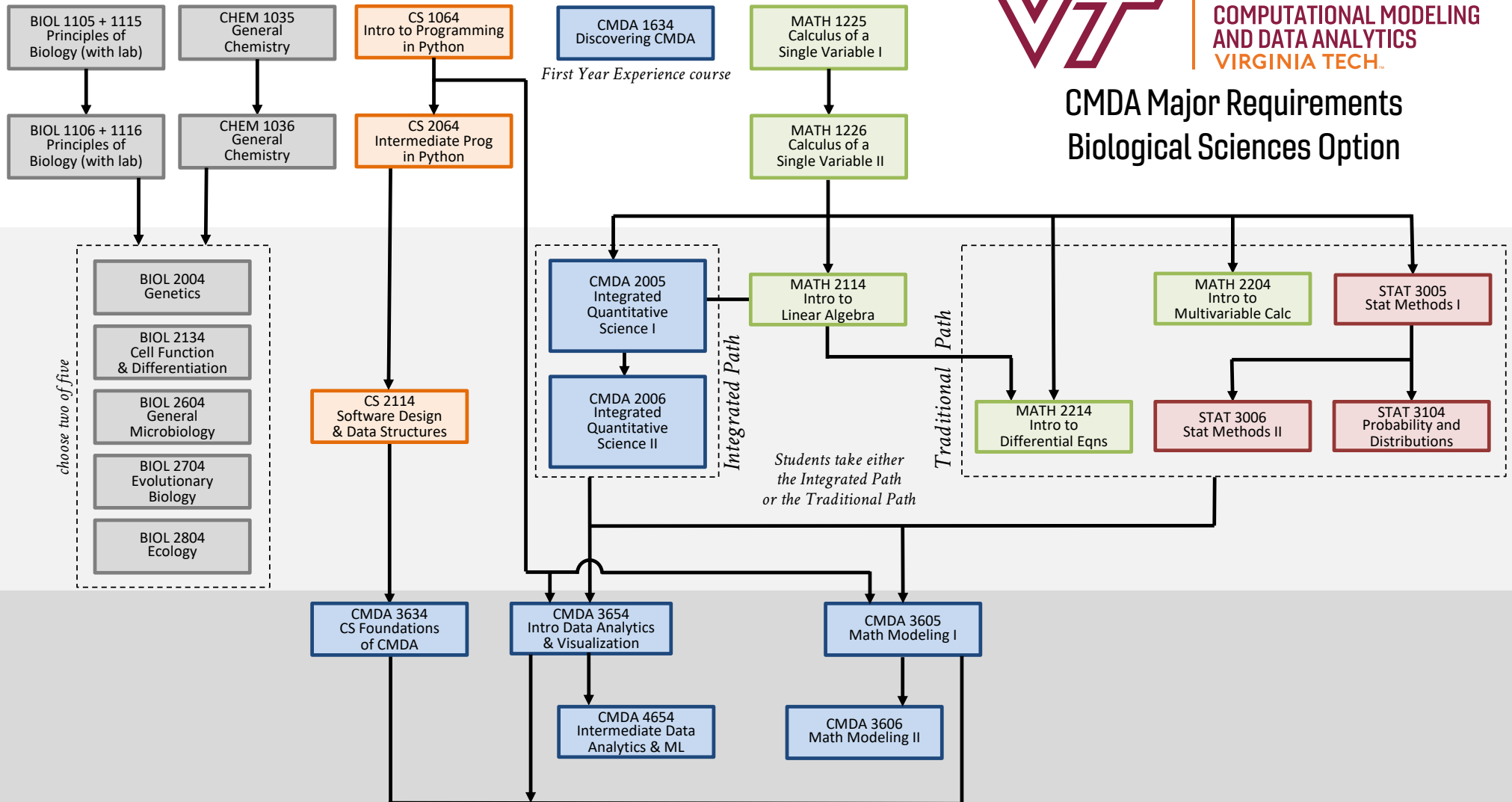




CMDA Major Requirements Biological Sciences Option



+ 3 elective courses
 (2 from the BIOL/SYSB list,
 1 from the CMDA list)
*At most 1 Undergraduate Research
 course may be counted.*

- BIOL/SYSB electives include the following:*
- SYSB 3035 Systems Biology of Genes and Proteins (4 credits)
 - SYSB 3036 Systems Biology of Genes and Proteins (4 credits)
 - SYSB 3114 Network Dynamics and Cell Physiology (4 credits)
 - SYSB 3116 Network Dynamics and Cell Physiology (4 credits)
 - BIOL 4134 Evolutionary Genetics
 - BIOL 4564 Infectious Disease Ecology
 - BIOL 4114 Global Change Ecology
 - BIOL 4004 Freshwater Ecology (4 credits)
 - BIOL 4624 Microbial Genetics
 - BIOL 4664 Virology
 - BIOL 4874 Cancer Biology

- CMDA electives include the following:*
- CMDA 4664 Computational Intensive Stochastic Modeling
 - CS 3824 Intro to Computational Biology and Bioinformatics
 - MATH 4454 Applied Mathematical Modeling
 - STAT 4364 Introduction to Statistical Genomics

*CMDA 4864 (CMDA Capstone) requires the prerequisite of
 CMDA 3605, 3634, and 3654. Students are strongly encouraged
 to also take CMDA 3606 and 4654 before the CMDA Capstone.*